

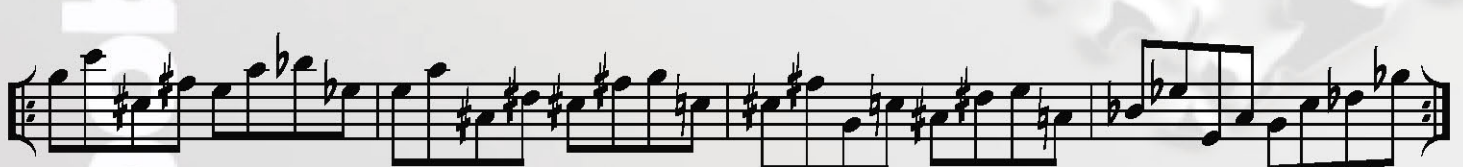
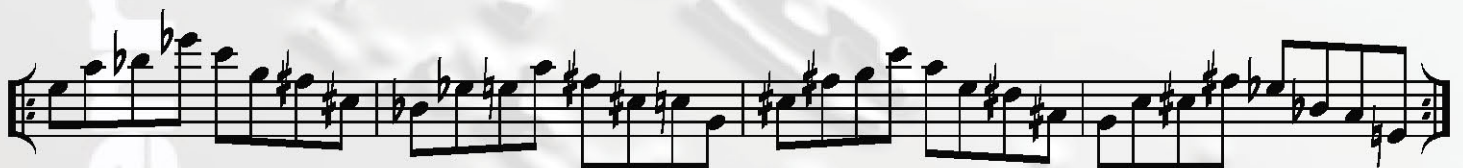
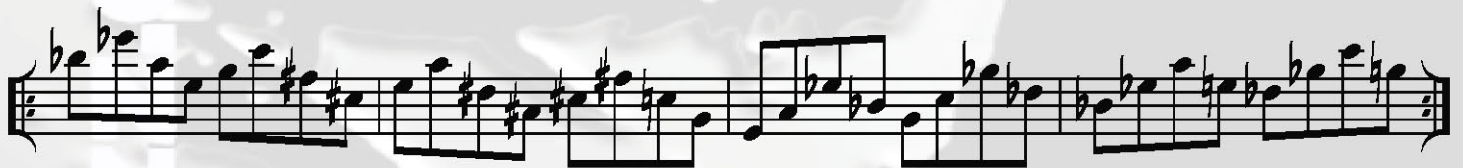
Diminished Scale 4th Patterns

based on 4th pairs, a tritone apart

I - C, Eb, Gb, A (Half Tone - Whole Tone) Diminished

©2014 bobbysternjazz.com

All Rights Reserved



Diminished Scale 4th Patterns

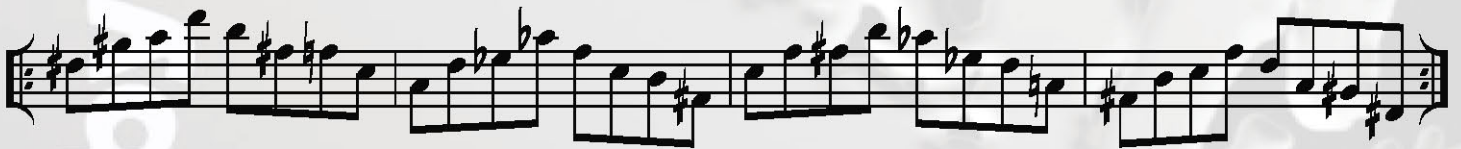
based on 4th pairs, a tritone apart

©2014 bobbysternjazz.com.

All Rights Reserved



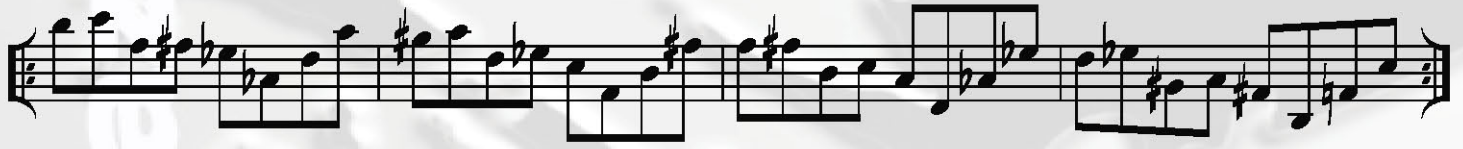
II - B, D, F, Ab (Half Tone - Whole Tone) Diminished



Diminished Scale 4th Patterns

based on 4th pairs, a tritone apart

©2014 bobbysternjazz.com.
All Rights Reserved



III - Bb, Db, E, G (Half Tone - Whole Tone) Diminished



Diminished Scale 4th Patterns

based on 4th pairs, a tritone apart

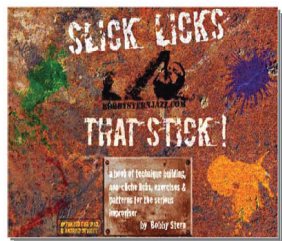
©2014 bobbysternjazz.com.

All Rights Reserved

The image displays six staves of musical notation, each containing a sequence of notes with accidentals (sharps, flats, and naturals) that illustrate diminished scale 4th patterns. The patterns are based on 4th pairs that are a tritone apart. The notation includes stems, beams, and various accidentals to show the specific intervals and scale structures.

Expand Your Improv Vocabulary!

Double Your Slickness



Available for Immediate Download!

Exclusively from

www.bobbysternjazz.com