

Major Pentatonic Modes

12 tones, each arranged as the first note of each mode

Bobby Stern

©2013 bobbysternjazz.com

C: i. C maj. pentatonic

ii. Bb maj. pentatonic

iii.



Ab maj. pentatonic

iv.

F maj. pentatonic

v.

Eb maj. pentatonic



C#: i. C# maj. pentatonic

ii.

B maj. pentatonic

iii.



A maj. pentatonic

iv.

F# maj. pentatonic

v.

E maj. pentatonic

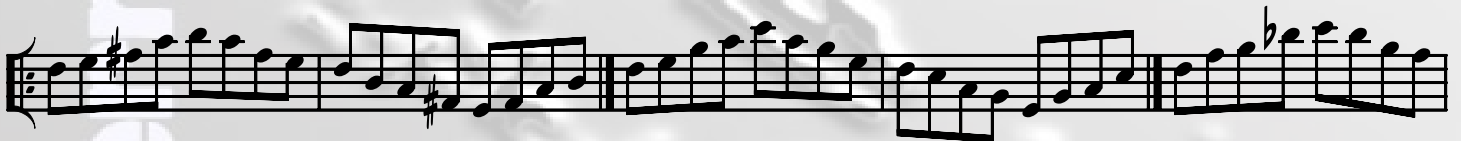


D: i. D maj. pentatonic

ii.

C maj. pentatonic

iii.



Bb maj. pentatonic

iv.

G maj. pentatonic

v.

F maj. pentatonic



Eb: i. Eb maj. pentatonic

ii.

Db maj. pentatonic

iii.



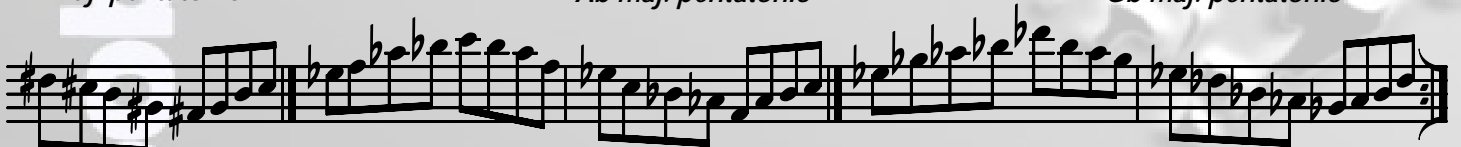
B maj. pentatonic

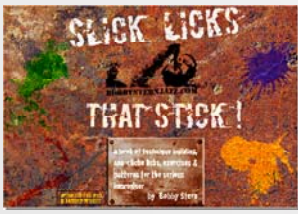
iv.

Ab maj. pentatonic

v.

Gb maj. pentatonic





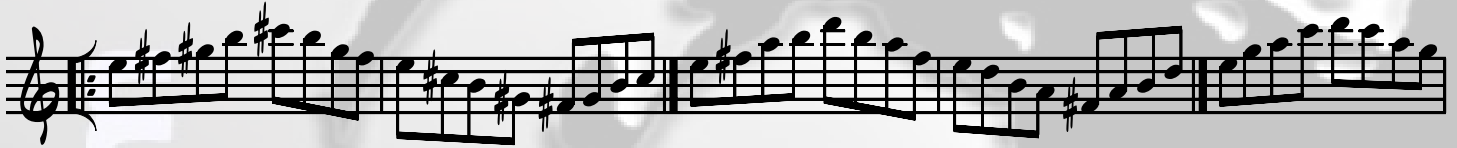
Major Pentatonic Modes

12 tones, each arranged as the first note of each mode

Bobby Stern

©2013 bobbysternjazz.com

E: i. *E maj. pentatonic* ii. *D maj. pentatonic* iii.



C maj. pentatonic iv. *A maj. pentatonic* v. *G maj. pentatonic*



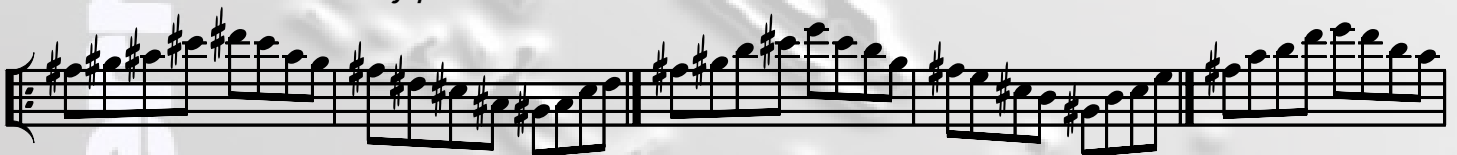
F: i. *F maj. pentatonic* ii. *E \flat maj. pentatonic* iii.



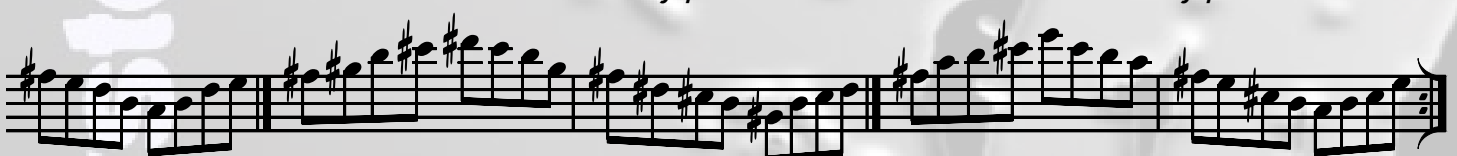
D \flat maj. pentatonic iv. *B \flat maj. pentatonic* v. *A \flat maj. pentatonic*



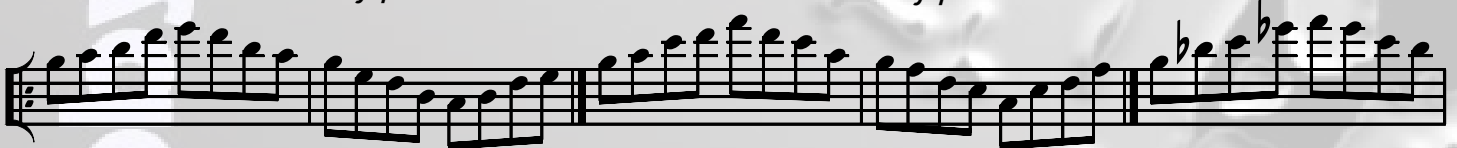
F#: i. *F# maj. pentatonic* ii. *E maj. pentatonic* iii.



D maj. pentatonic iv. *B maj. pentatonic* v. *A maj. pentatonic*

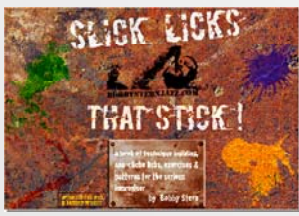


G: i. *G maj. pentatonic* ii. *F maj. pentatonic* iii.



E \flat maj. pentatonic iv. *C maj. pentatonic* v. *B \flat maj. pentatonic*





Major Pentatonic Modes

12 tones, each arranged as the first note of each mode

Bobby Stern

©2013 bobbysternjazz.com

A^b: i. *Ab maj. pentatonic* ii. *Gb maj. pentatonic* iii.

E maj. pentatonic iv. *Db maj. pentatonic* v. *B maj. pentatonic*

A: i. *A maj. pentatonic* ii. *G maj. pentatonic* iii.

F maj. pentatonic iv. *D maj. pentatonic* v. *C maj. pentatonic*

B^b: i. *Bb maj. pentatonic* ii. *Ab maj. pentatonic* iii.

Gb maj. pentatonic iv. *Eb maj. pentatonic* v. *Db maj. pentatonic*

B: i. *B maj. pentatonic* ii. *A maj. pentatonic* iii.

G maj. pentatonic iv. *E maj. pentatonic* v. *D maj. pentatonic*